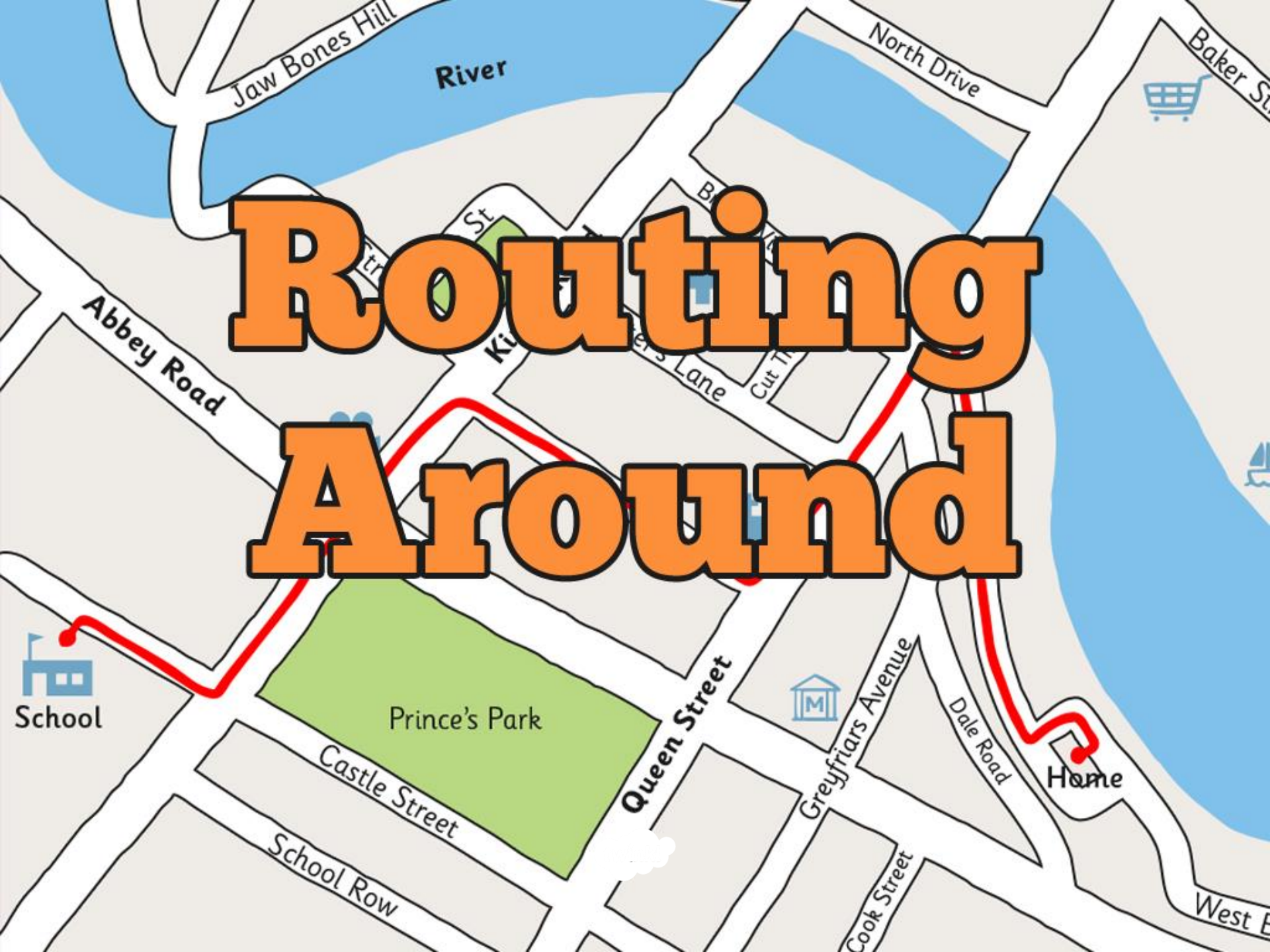




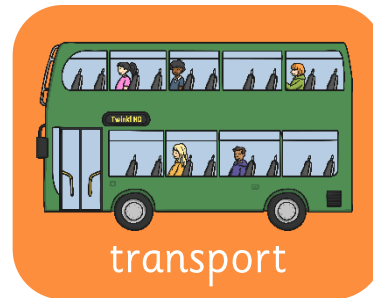
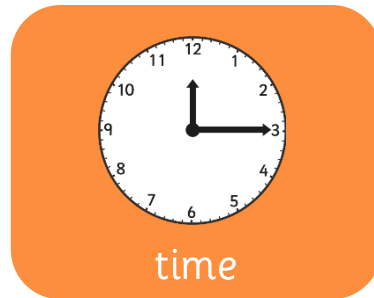
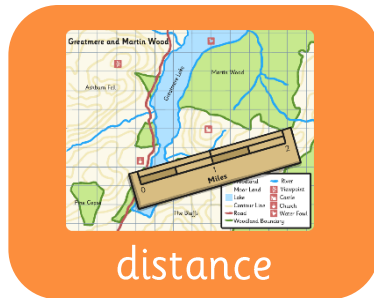
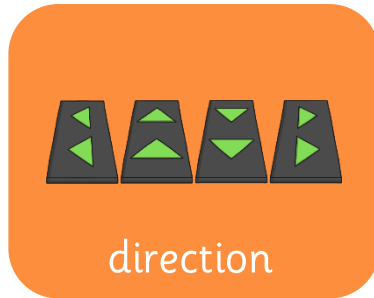
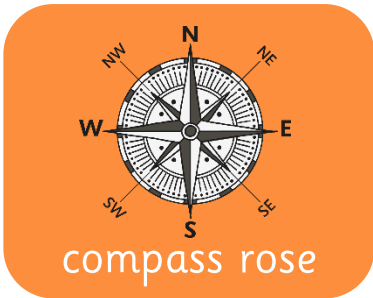
Geography

Magical Mapping

Routing Around



Key Words



North, East, South or West

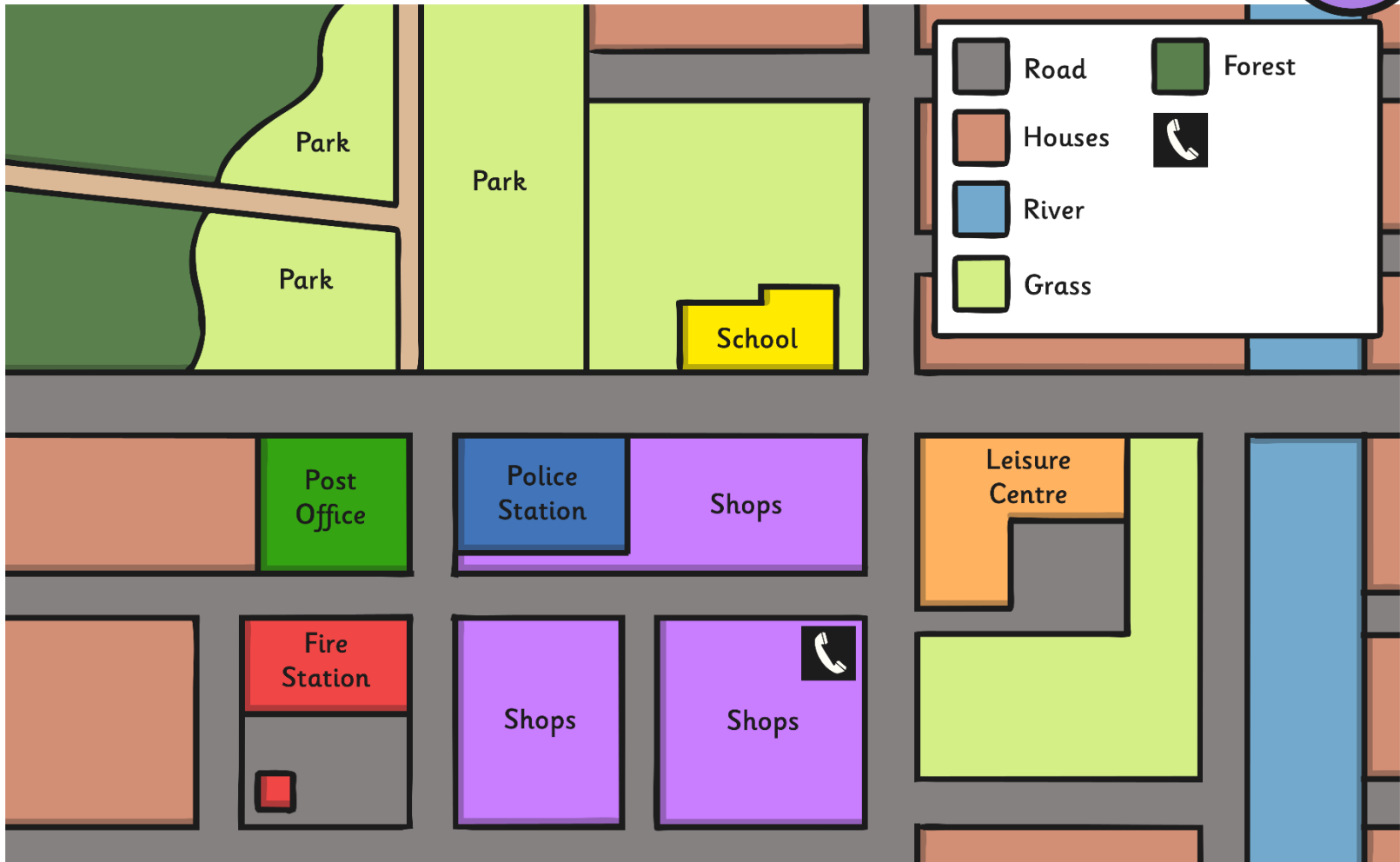
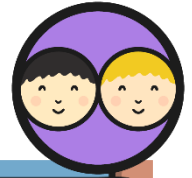


What can you remember about compass directions?

- What are the four points of a compass?
- What do we use a compass for?
- Who might use a compass?



Compass Challenge



Routing Around



What is a route?

What routes do you take?

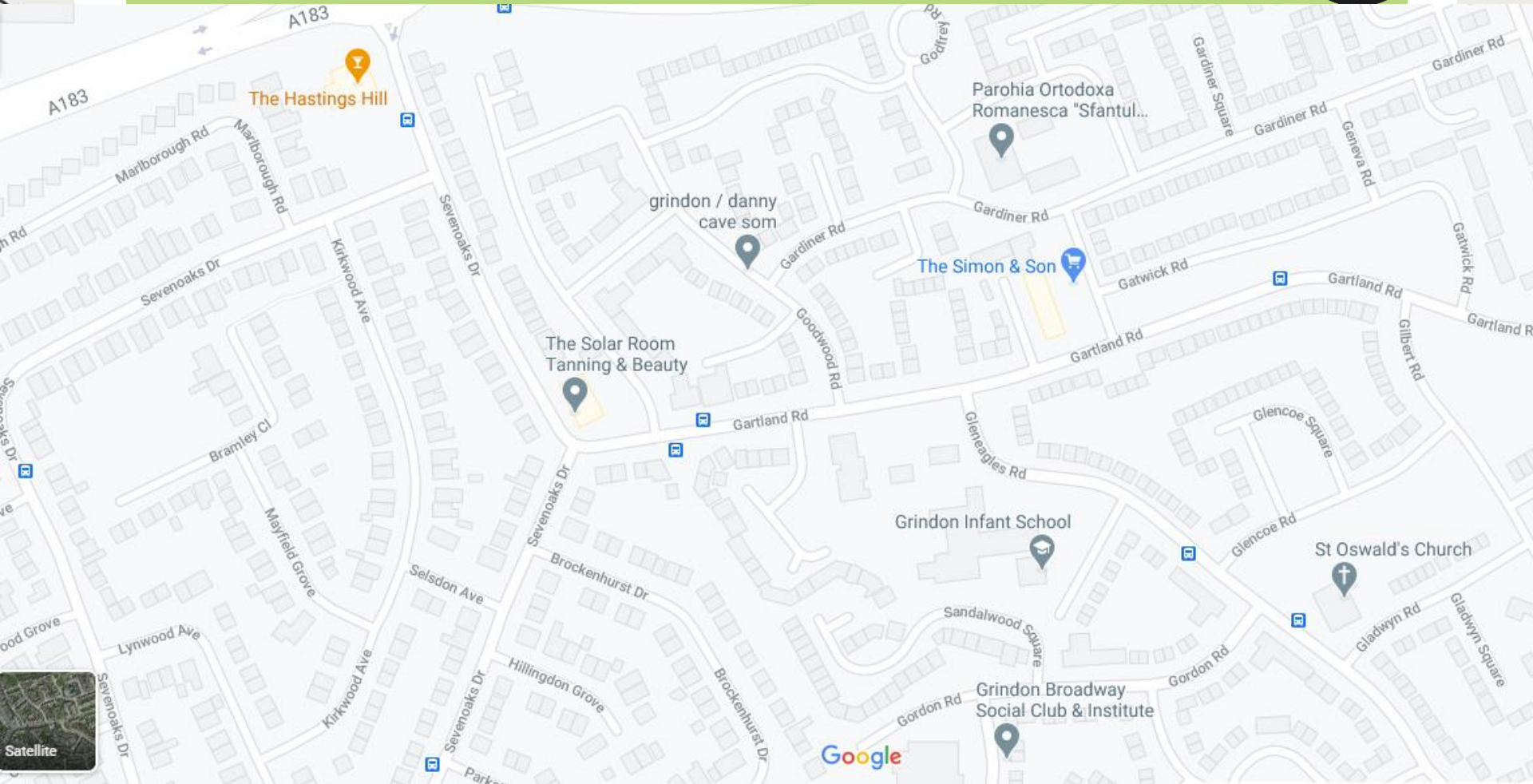
Are these routes near or far?

Why do people plan a route?



What methods of transport might you use?

Routing Around



Let's Plan a Route



Use your map to plan a route from the school to a place of interest in the local area.

Draft a route, then use coloured pencils to highlight your route and add it to your key.



Challenge: Can you plan a different route to the same place?
Which route would you take if you were to travel by bus, bike or car?

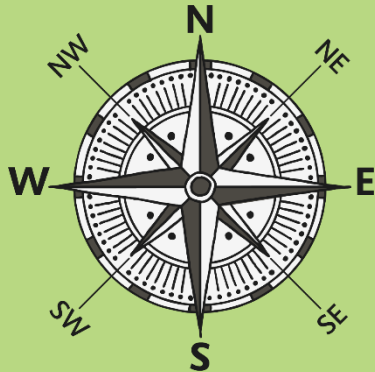
Where Did We Go?



Describe the routes you have planned.

When describing your routes, don't forget to use:

Compass directions



Road or street names



Places you may pass





Jaw Bones Hill
River

North Drive

Baker St

River Street

Park St

King's Road

Bridge View

Cutter's Lane

Cut Through

Abbey Road



School

Prince's Park



Home

Queen Street

Greyfriars Avenue

Dale Road

Castle Street

School Row

Cook Street

West E